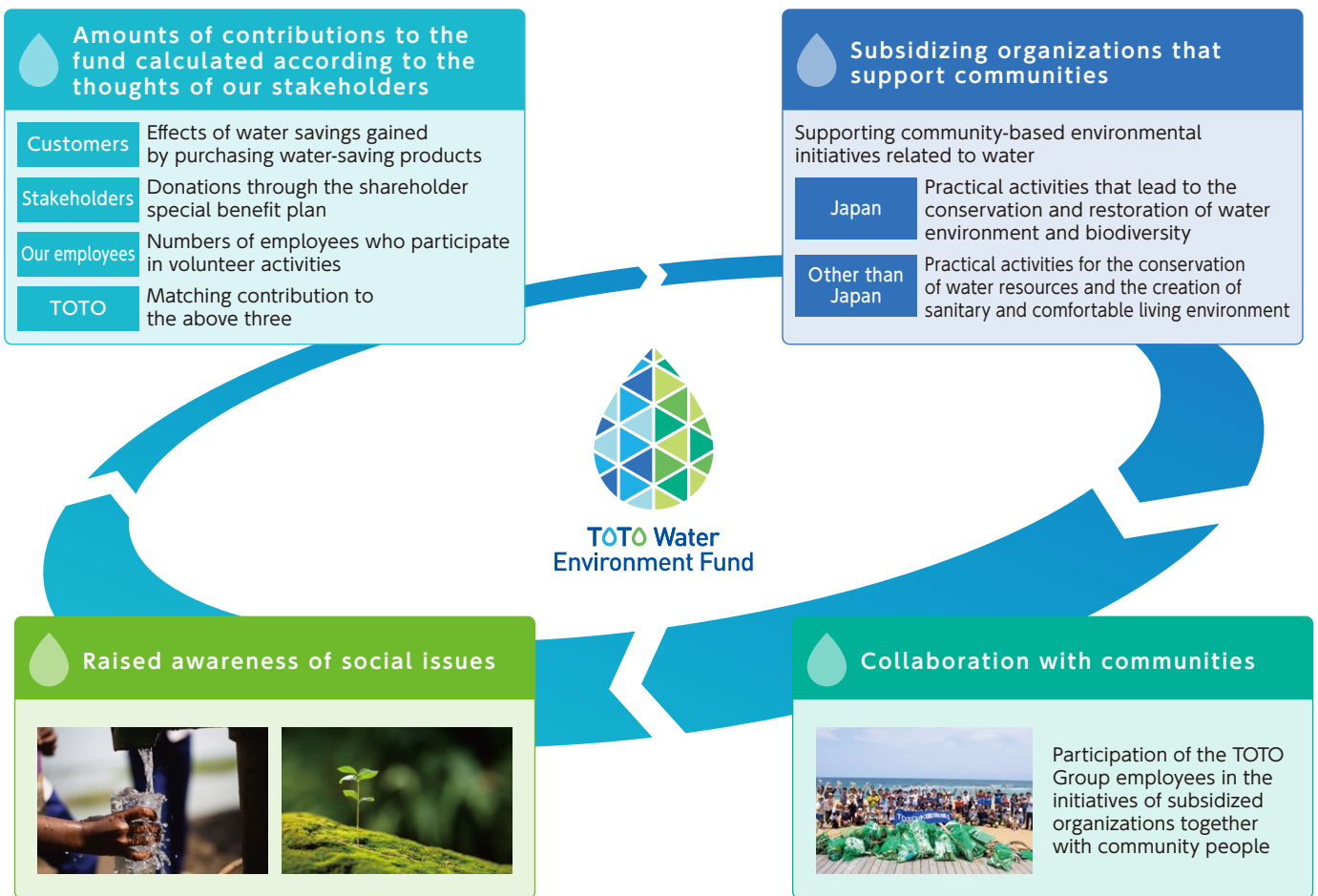


Mechanism of TOTO Water Environment Fund



Amounts of contributions to the fund calculated according to the thoughts of our stakeholders

The amount of the fund is determined according to the monetary values calculated from the water-saving effects gained through customers' purchases of water-saving products, our stakeholders' agreement on donations, and numbers of the TOTO Group employees who participate in volunteer activities and give donations to which TOTO matches its contribution. The more involved our stakeholders are, the more the amount of the fund increases.

Subsidizing organizations that support communities

Selectors who are chosen from the TOTO Group employees determine the organizations to be subsidized by mainly focusing on whether the initiative can be community-based and whether the initiative is on a continuous basis, not temporary, with the hope that TOTO would like to solve issues related to water environment together. In addition, a Subsidized Organizations Networking Event is held every year in order to network and form relationships for subsidized organizations.



Collaboration with communities

TOTO Group employees participate in the activities of subsidized organizations together with community people. Even after the end of the subsidizing period, interactions with the community people, including those in the subsidized organizations, are continued, and the scope of activities is expanding year after year.



Raised awareness of social issues

As our stakeholders, irrespective of internal or external ones, raise the awareness of social issues driven by their involvement in the TOTO Water Environment Fund, the scope of activities expands greatly.